



Santa Ana Winds with Warming Temperatures through Next Week

KEY POINTS

- **Another round of moderate Santa Ana winds returns Sunday, with periods of Santa Ana winds occurring through much of next week.**
- **Elevated fire weather conditions continue.**
- **Gradually warming temperatures through the middle of next week.**

WEATHER RISK OUTLOOK

Risk levels incorporate potential impacts from weather hazards and likelihood of occurrence.

	Sat 2/5	Sun 2/6	Mon 2/7	Tue 2/8	Wed 2/9	Thu 2/10	Fri 2/11
Orange/San Diego Beaches							Elevated Surf Rip Currents
San Diego Coast San Diego, La Jolla, Oceanside		Frost					
San Diego Valleys Alpine, Escondido, Ramona		Wind Frost	Wind Fire Weather	Wind	Wind Fire Weather	Wind Fire Weather	
San Diego County Mtns Mt Laguna, Julian, Palomar Mt	Wind	Wind	Wind Fire Weather	Wind	Wind Fire Weather	Wind Fire Weather	
San Diego Deserts Anza Borrego, Ocotillo Wells							
Orange County Coast Laguna and Huntington Beaches		Wind	Wind				
Orange County Inland Anaheim, Irvine, Yorba Linda		Wind Fire Weather	Wind Fire Weather	Wind	Wind Fire Weather	Wind Fire Weather	
Santa Ana Mountains Silverado, Santiago Peak	Wind	Wind Fire Weather	Wind Fire Weather	Wind	Wind Fire Weather	Wind Fire Weather	
Inland Empire Ontario, Riverside, Temecula		Wind Fire Weather Frost	Wind Fire Weather	Wind	Wind Fire Weather	Wind Fire Weather	
Riverside County Mtns Mt San Jacinto, Idyllwild	Wind	Wind	Wind Fire Weather	Wind	Wind Fire Weather	Wind Fire Weather	
Coachella Valley Palm Springs, Indio		Wind Frost	Wind				
San Bernardino Mtns Wrightwood, Big Bear	Wind	Wind Fire Weather	Wind Fire Weather	Wind	Wind Fire Weather	Wind Fire Weather	
High Deserts Victorville, Lucerne Valley							

Risk Levels	Little to None	Minor	Moderate	Major	Extreme
--------------------	-----------------------	--------------	-----------------	--------------	----------------

DETAILS

Mountains, Inland Valleys, Inland Orange County



Impacts:

Hazardous travel for high profile vehicles. Tree damage possible. Strong winds could blow away unsecured outdoor objects. Areas of blowing dust could reduce visibility.

Timing:

Periods of weak to moderate Santa Ana winds through next week.

Confidence:

Moderate confidence in strength and timing, with high confidence in occurrence Sunday through Thursday .

Gusty east to northeast winds will occur through the passes and wind-prone foothills today with wind gusts of 30 to 40 mph.

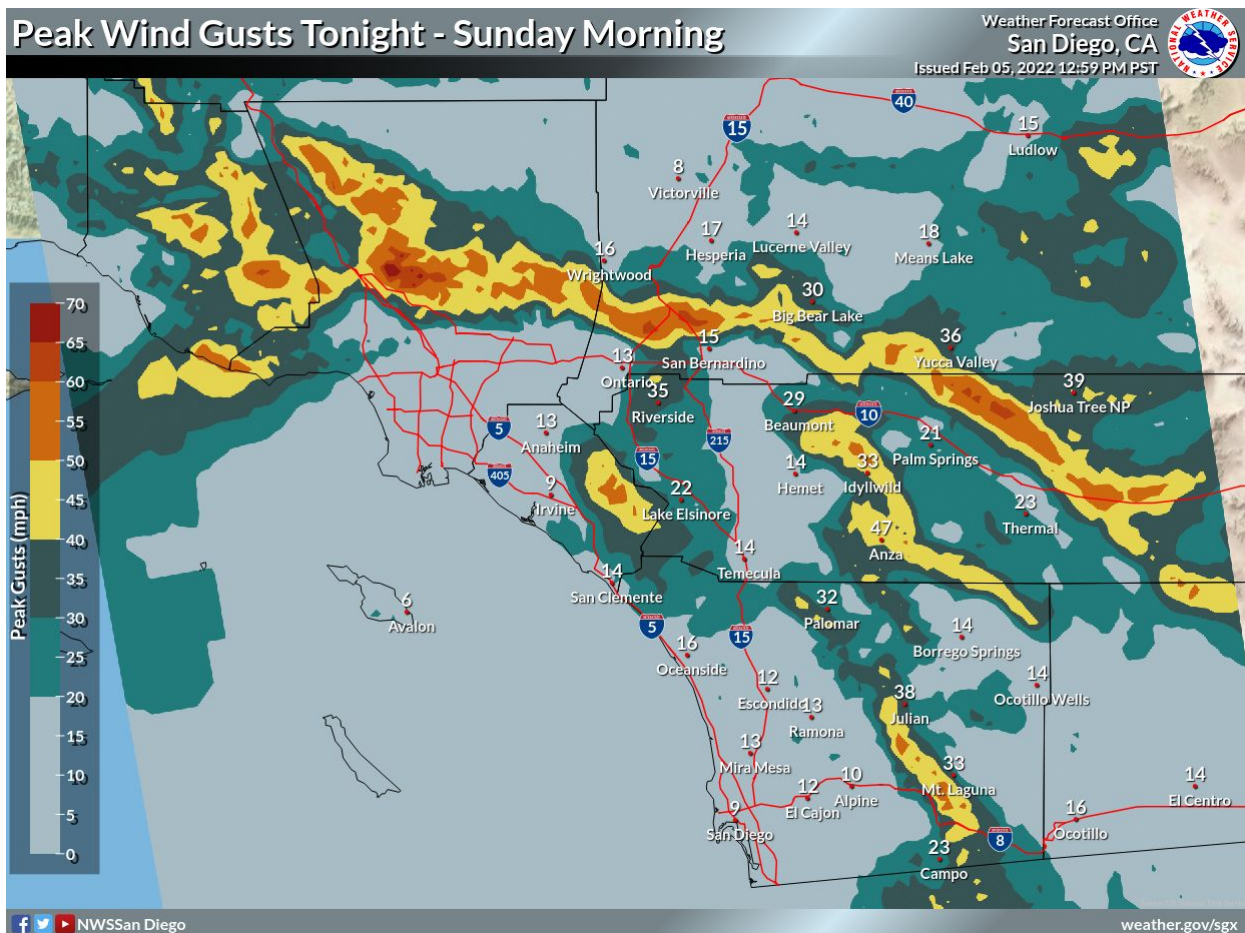
Winds will increase overnight across the San Bernardino County Mountains, portions of the Inland Empire and the Santa Ana Mountains. Northeast wind gusts of 45 to 55 mph will occur. Winds will turn more easterly Sunday night and expand farther south into the Riverside County Mountains and the San Diego County Mountains. Minimum relative humidity values will fall as low as 10-15% each afternoon, leading to elevated fire weather conditions. Winds will diminish for Monday and Tuesday but are expected to increase again for Wednesday and Thursday.

FOR MORE INFORMATION

For the latest forecast updates, visit weather.gov/sandiego.

If you have questions or would like to submit weather reports, photos, or to unsubscribe from these briefings, email sgx.forecasters@noaa.gov or call (858) 675-8705.

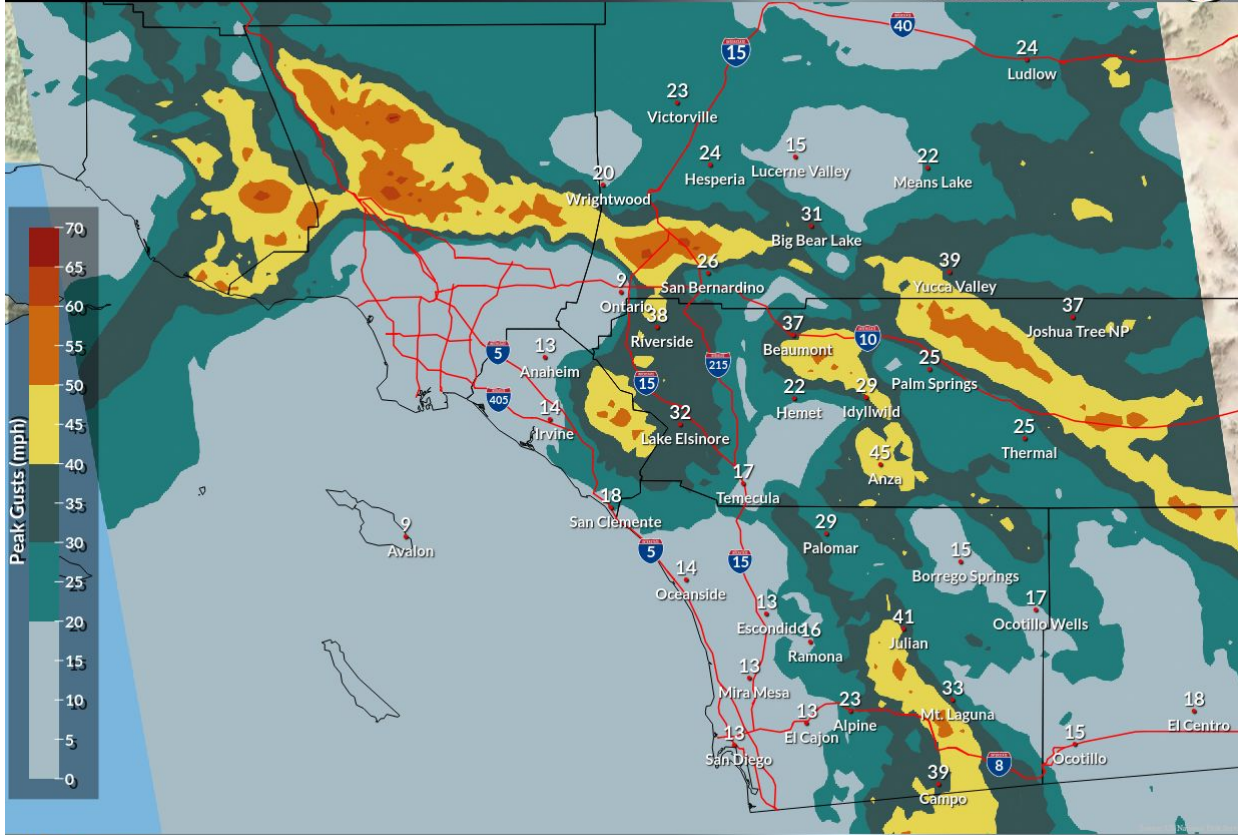
GRAPHICS



Peak Winds Tonight

Peak Wind Gusts Sunday Morning - Sunday Evening

Weather Forecast Office
San Diego, CA
Issued Feb 05, 2022 1:00 PM PST



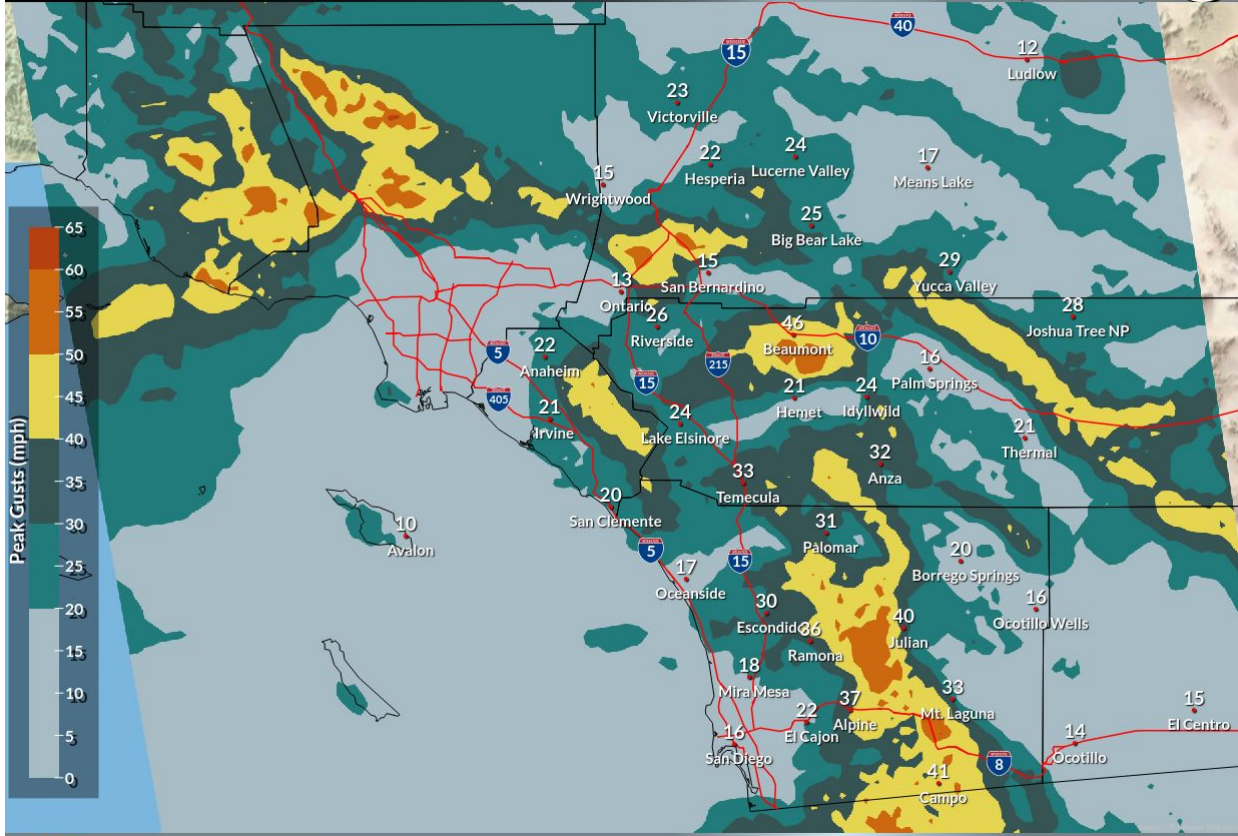
f NWSSan Diego

weather.gov/sgx

Peak Winds Sunday

Peak Wind Gusts Sunday Night - Early Tuesday AM

Weather Forecast Office
San Diego, CA
Issued Feb 05, 2022 1:01 PM PST



f NWSSan Diego

weather.gov/sgx

Peak Winds Sunday PM - Tuesday AM

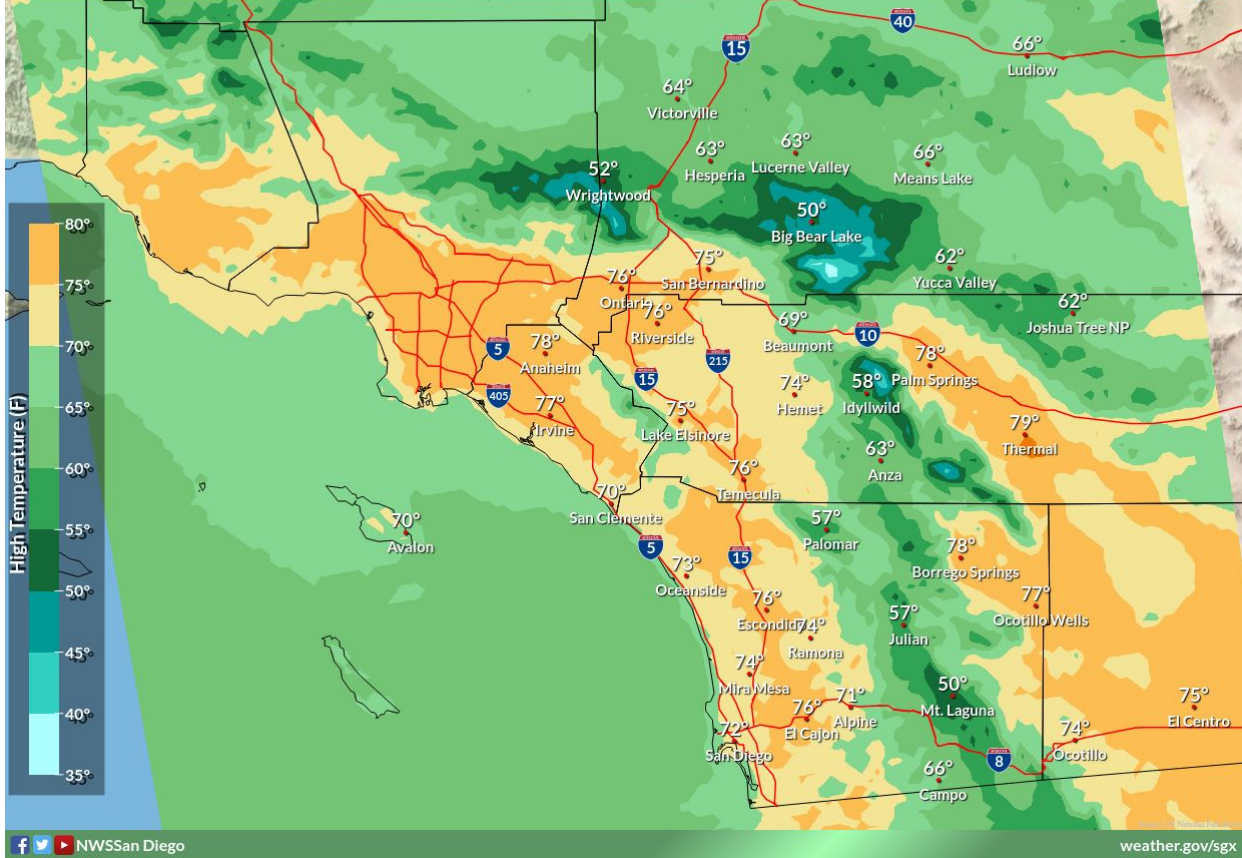
Sunday's Highs

Weather Forecast Office
San Diego, CA



Increasing Temperatures through the Weekend and Early Next Week

Issued Feb 05, 2022 1:04 PM PST



High Temperatures Sunday

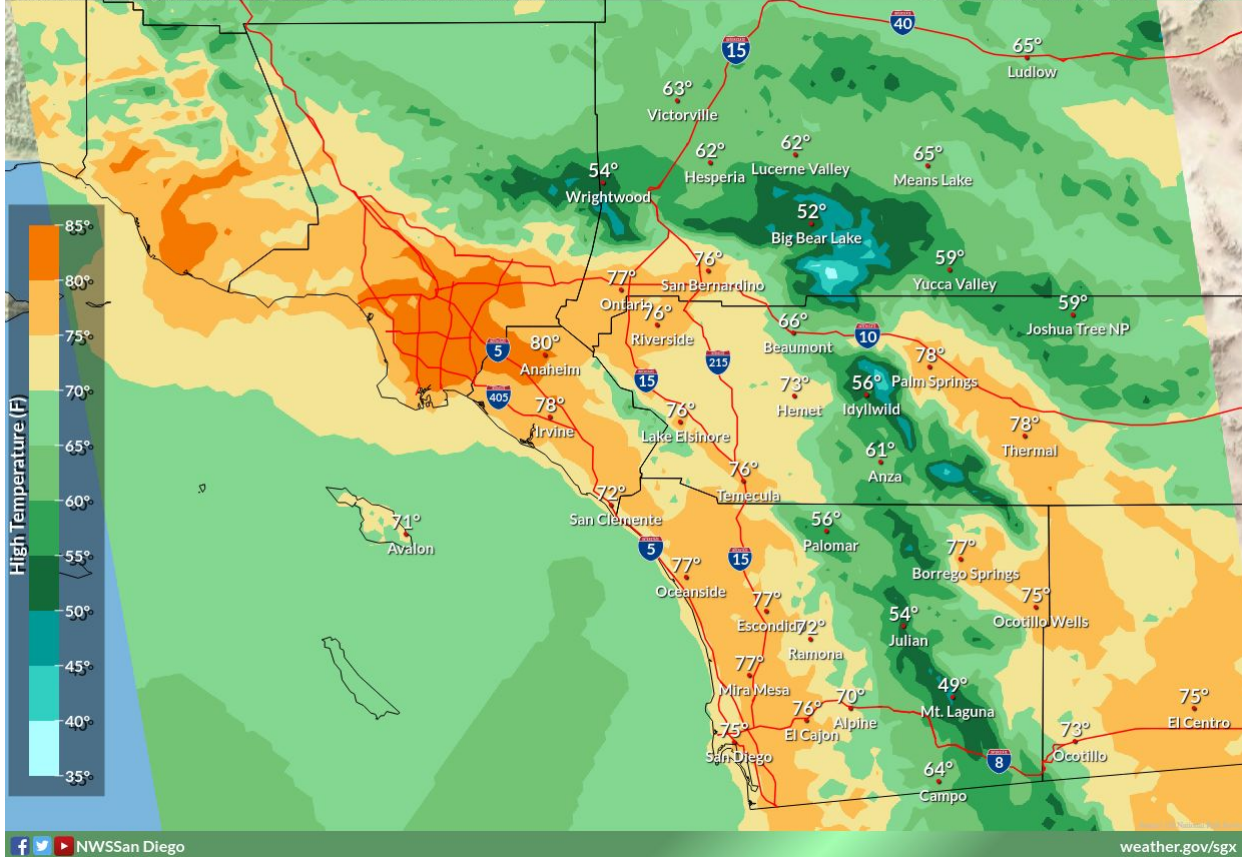
Monday's Highs

Weather Forecast Office
San Diego, CA



Increasing Temperatures through the Weekend and Early Next Week

Issued Feb 05, 2022 1:04 PM PST



High Temperatures Monday

