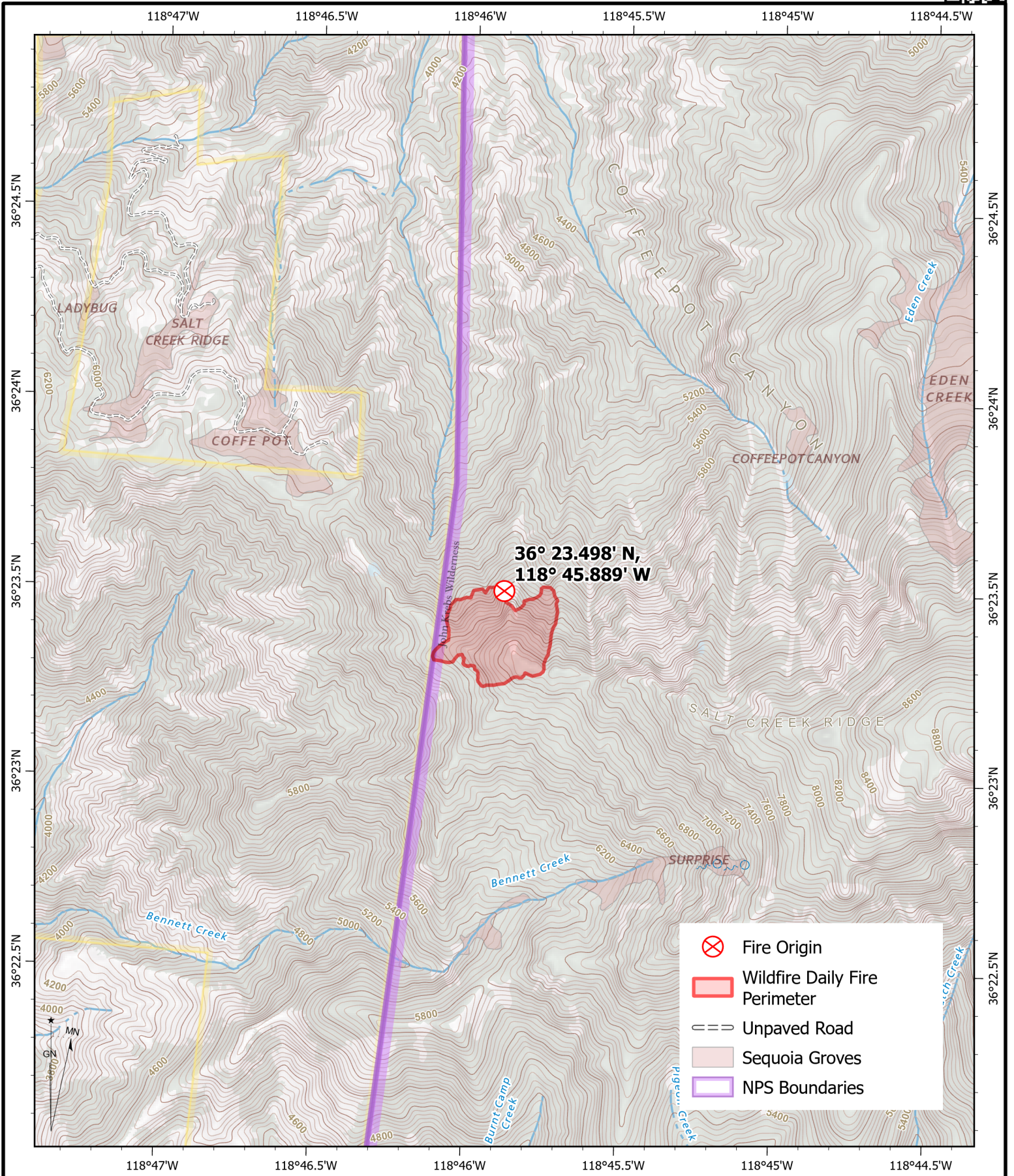


Coffee Pot Fire, CA-KNP-000088

49 acres at 8/14/2024 0937

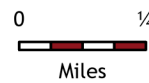
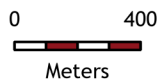
Situation Map

Sequoia and Kings Canyon National Parks



This map shows wildfire features in Sequoia and Kings Canyon National Parks related to the Coffee Pot Fire.

Produced by: NPS, SEKI GIS (UF), 8/14/2024 1318



SCALE: 1:24,000 1 inch equals 2,000 ft or 0.38 mi
1 cm equals 240 m or 0.24 km
COORDINATE SYSTEM: NAD 1983 2011 UTM Zone 11N
GRID: Degrees Decimal Minutes